

NatuRegio
**Nature Conservation and Regional Development in
South Eastern Europe**

Project Proposal:

***Managing a Natura 2000 site – elaboration of the
conservation measures for the special
protection area Bistret***

Laurian Gheorghe
**Ministry of Environment and Sustainable
Development**
Nature Protection Office

AIM OF THE PROJECT

- *To establish a plan of conservation measures for a Natura 2000 site, particularly for a special protection area*



WHY?

- Natura 2000 network - a new issue for Romania
- The management of the network – big challenge
- No management plan for Natura 2000 sites exist in Romania so far
- A minimum set of conservation measures were elaborated by the PHARE Project “Implementation of Natura 2000 Network in Romania”

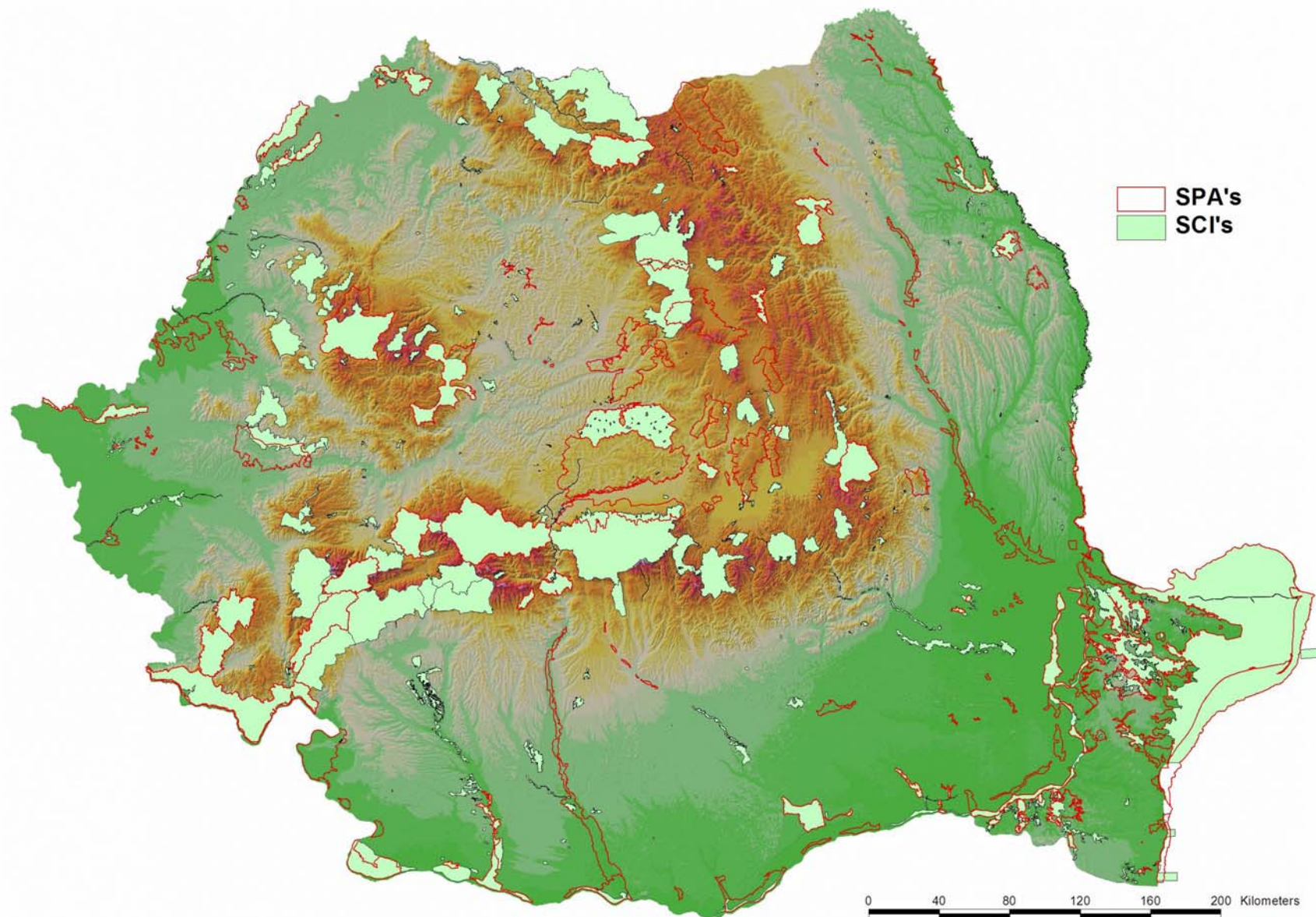
WHY?

- The conservation measures – important for maintaining the species in a favorable conservation status
- Important for the compensatory payments

Background

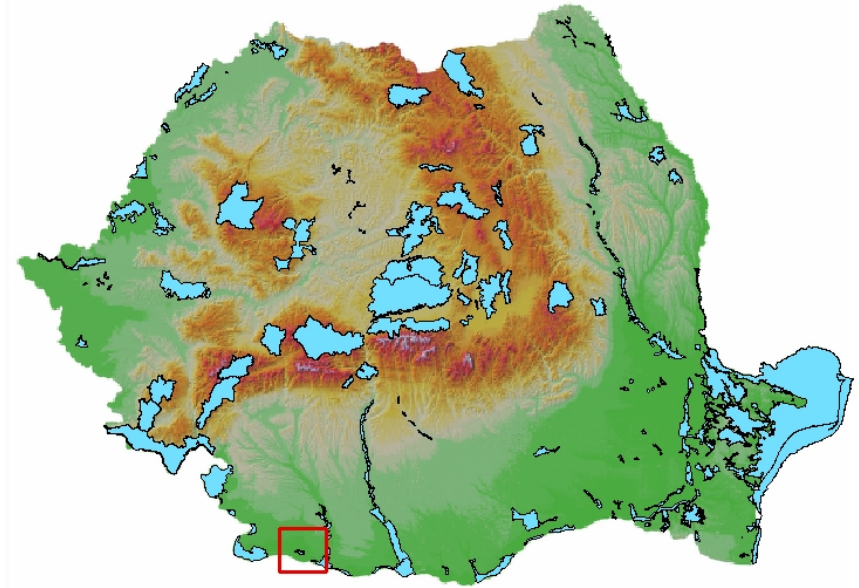
- Romania – the only EU member with 5 biogeographical regions
- After the accession of Romania and Bulgaria, two new biogeographical regions were added to the EU
- Natura 2000 network – 17 percent of the Romanian territory
- 273 sites of community importance (Habitats Directive) – subject of the biogeographical seminars this year
- 108 special protection areas (Birds Directive)

Natura 2000 network in Romania

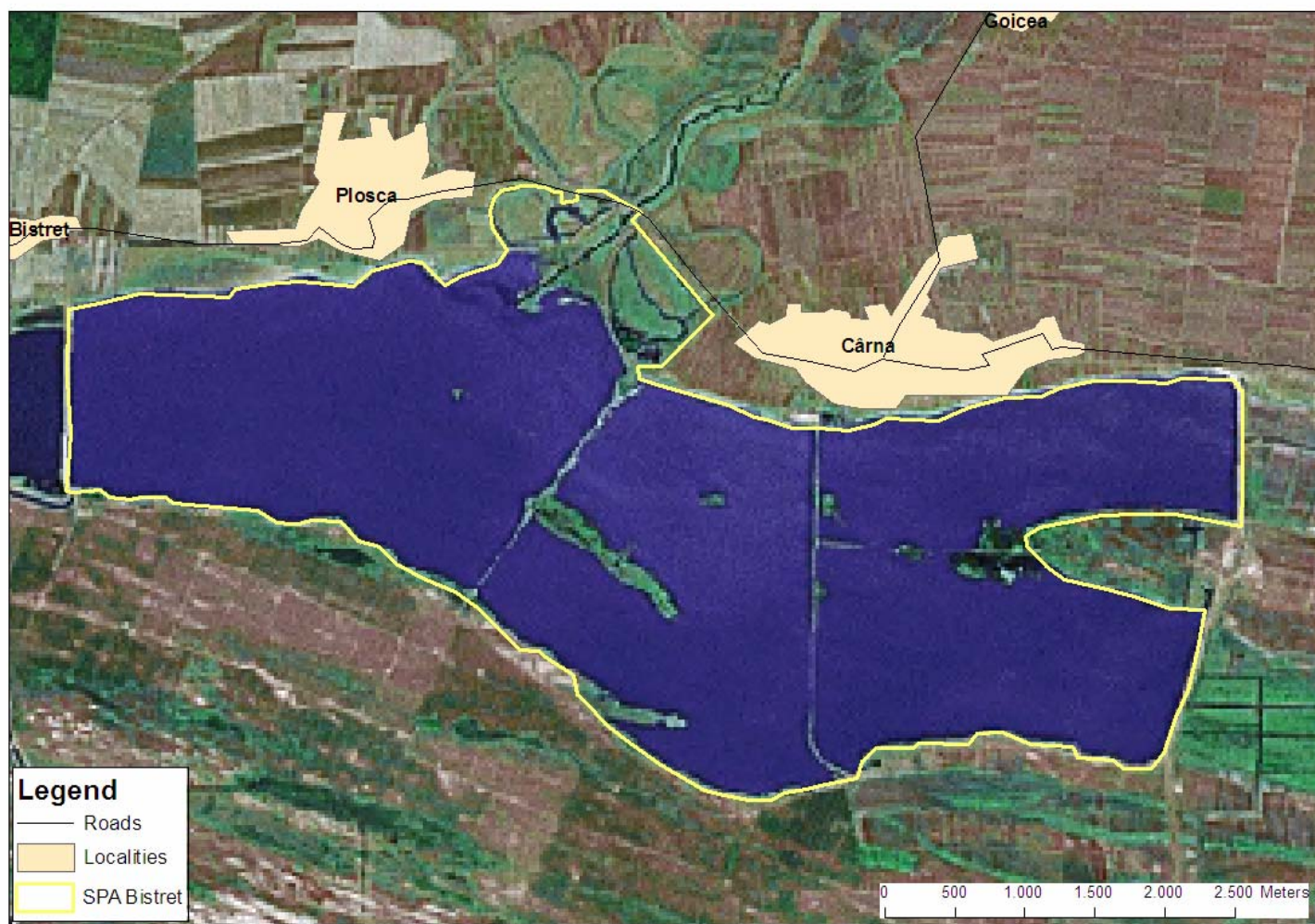


Description of the area

- Bistret Lake is situated in the South West of Romania, near the Danube
- 1936 ha surface
- Much bigger in the past, with a high biodiversity
- In the 70' – the flooded meadow of the Danube was drained for the agriculture



Limits of the SPA Bistret



Description of the area



- The drainage transformed the land
- Many lakes disappeared
- Bistret reduced its surface
- Biodiversity decreased

Description of the area

- Until 2007 – no protection status
- Important Bird Area
- 23 species from Annex I of the Birds Directive
- 72 species listed in the annexes of the Bonn Convention for migratory birds



Description of the area

Alcedo atthis, Anser erythropus, Ardea purpurea, Ardeola ralloides, Aythya nyroca, Branta ruficollis, Ciconia ciconia, Cygnus cygnus, Mergus albellus, Pelecanus crispus, Pelecanus oncrotalus, Phalacrocorax pygmeus



Objectives of the project

1. Evaluation of the ecological needs of the birds species and their habitats in the SPA Bistret.
2. Elaboration of the conservation measures for the species listed in the Annex I of the Birds Directive and occurring in the SPA Bistret
3. Raise of the public awareness regarding the importance of the SPA Bistret

Partners

Oltenia Museum for Natural Sciences

University of Craiova, Faculty of Geography

Dolj Environmental Protection Agency

SC Piscicola Dunareni SA

Subtargets

- Inventory of the birds species and their habitats
- Elaboration of the feeding and nesting places map
- Identification and analyze of the major threats and stress factors for the birds species and their habitats
- Elaboration of a plan of conservation measures
- Involvement of the school children
- Information of the public about the SPA Bistret

WORKPLAN

Objective	Subtargets	Activities	Timetable						Responsible	
			M	A	M	J	J	A		
A.Evaluation of the ecological needs of the birds species and their habitats in the SPA Bistret	A.1 Inventory of the birds species and their habitats	A.1.1 Inventory of the bird species listed in the Annex I of the Birds Directive and the migratory species protected by the international conventions							Oltenia Museum, LEPA Dolj	
		A.1.2 Monitoring of the birds species in different phenological phases								Oltenia Museum, LEPA Dolj
		A.1.3 Inventory of the nesting and feeding places							Oltenia Museum, LEPA Dolj, SC Piscicola Dunareni	
	A.2 Elaboration of the feeding and nesting places map	A.2.1 Mapping of feeding and nesting places							MESD, Oltenia Museum, Faculty of Geography	
		A.2.2 Realization of the map							MESD, Faculty of Geography	
		B.1 Identification and analyze of the major threats and stress factors for the birds species and their habitats	B.1.1 Inventory of the human activities inside and near the SPA Bistret and analyze of their impact on the site							MESD, Oltenia Museum, LEPA Dolj
B.Elaboration of the conservation measures for the species listed in the Annex I of the Birds Directive and occurring in the SPA Bistret	B.1 Identification and analyze of the major threats and stress factors for the birds species and their habitats	B.1.2 Inventory of natural hazards which can affect the site							Faculty of Geography, Oltenia Museum	
		B.1.3 Identification and classification of the threats and stress factors for the birds and the habitats							MESD, Oltenia Museum, LEPA Dolj	
		B.1.4 Realization of the map of the threats							MESD, Faculty of Geography	
		B.2 Realization of a conservation plan	B.2.1 Organization of 2 meetings with the stakeholders							ALL
	B.2 Realization of a conservation plan	B.2.2 Elaboration of the conservation measures								Oltenia Museum
		C.1 Involvement of the school children	C.1.1 Organizing 4 hours of nature conservation education for the school children from the villages situated near the site							ALL
C.Raise of the public awareness regarding the importance of the SPA Bistret	C.2 Information of the public about the SPA Bistret	C.2.1 Elaboration of an informational materiel to be published in the local papers							ALL	
		C.2.2 Publication of a leaflet about the Natura 2000 network and the importance of the SPA Bistret for the network							ALL	
		C.2.3 Realization of an information panel for the SPA Bistret							ALL	

Expected results

- A good inventory of the birds species necessary for updating the Standard Data Form
- Map of the habitats of the birds species
- Map of the most vulnerable areas
- The plan of the conservation measures



Perspectives

- model for the other SPA's from the county (3) or from the region
- basis for the first compensatory payments in Romania
- custody of the site
- basis for other projects in the area financed from the Structural Funds or other European Fund

Thank you!

